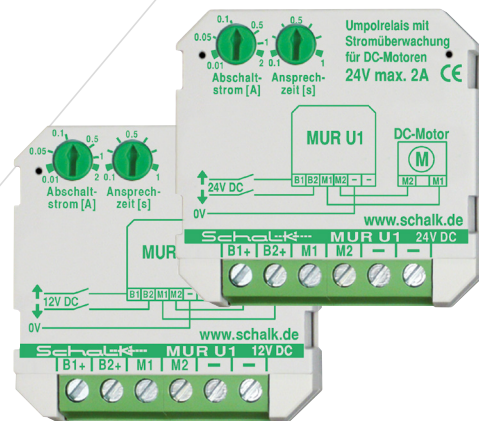


# Motor reversing relay MUR U1

Control relay for DC motors with pole reversal function and current monitoring for limit switching. Versions for 12V and 24V.

## Special features

- ▶ Adjustable current monitoring and adjustable response time for exact limit switching
- ▶ No continuous supply necessary, therefore easy installation
- ▶ Variants for 12 V and 24 V available
- ▶ Very compact design



## General information

Microdrives are increasingly being used in building automation. Such very compact drive systems usually work with DC motors and can therefore not be operated with conventional controls designed for AC motors.

The MUR U1 takes over the necessary conversion from AC control to DC drive. A reverse polarity logic is used to reverse the direction of travel, and an adjustable cut-off current in conjunction with the adjustable response time ensures an exactly adjustable and safe limit switch-off.

## Applications

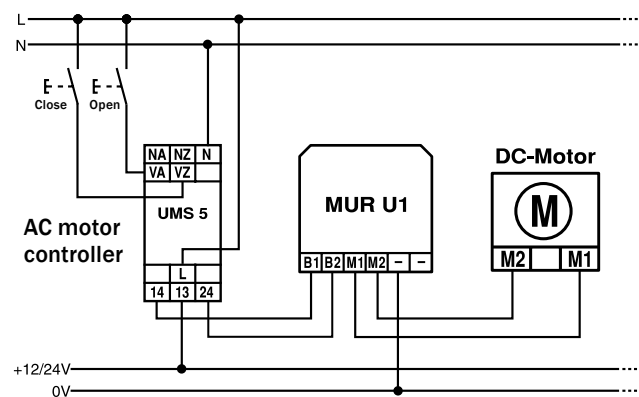
Conversion of AC controls to DC drives, e.g. for interior blinds, window openers and other modern small drives.

## Operation

Depending on the control at inputs B1+ or B2+, a correspondingly polarized output voltage is available at motor outputs M1 and M2.

To ensure a safe and also fast limit stop for drives without their own limit switches, the cut-off current is set just so high that the drive is not switched off when the motor is running freely. The response delay is then reset so far that the starting current increase of the connected motor is still safely overcome.

## Connection example



## Technical data

|                      |   |
|----------------------|---|
| Operating voltage:   | 12 V or 24 V DC                           |
| Power consumption:   | 0.3 W                                     |
| Switch rating        | max. 2 A                                  |
| Current limiting     | adjustable: 10 mA - 2 A                   |
| Response time        | adjustable: 0,1s - 1s                     |
| Ambient temperature  | -10°C to +45°C                            |
| Connection terminals | Socket terminals with captive screws M3   |
| Clamping range       | 0.5 mm <sup>2</sup> - 2.5 mm <sup>2</sup> |
| Strip length         | 6.5 mm - 7.0 mm                           |
| Screwing torque      | 0.50 Nm                                   |
| Mounting orientation | arbitrarily                               |
| External dimensions  | 43 x 43 x 18,5 mm                         |
| Weight               | approx. 40 g                              |
| RAL colour           | grey 7035 / green 6029                    |

## Order data

| Item no. | EAN             | Type            | Designation                              |
|----------|-----------------|-----------------|--|
| MURU14   | 4 046929 401074 | MUR U1 (24V DC) | Motor reversing relay, 24V DC, 10mA - 2A |
| MURU12   | 4 046929 401067 | MUR U1 (12V DC) | Motor reversing relay, 12V DC, 10mA - 2A |